



Your carton packaging solution !

PS900 Vertical bagging machine



GENERAL DESCRIPTION

- Pneumatic background forming system
- Automatic print centering
- Automatic roll centering
- Motorized sliding plate for finished bags
- Industry 4.0 compliance
- Eurohole
- Integrations with various weighing systems, coders, labellers and clippers

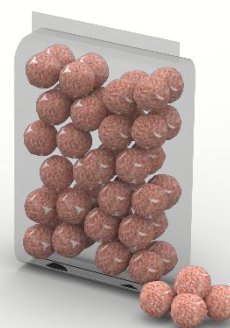


TECHNICAL SPECIFICATIONS

- Heat-sealable materials such as polypropylene and barrier films
- Machine dimensions : 2045 x 1327 x 1696
- Maximum width : 900 mm
- Maximum forming tube diameter : 280 mm
- Maximum bag weight : 700 mm
- Maximum bag width : 430 mm
- Maximum film diameter: 300 mm

QUICK AND EASY
FORMAT CHANGES

UP TO 40
BAGS/MIN



Sermatec
ZA La Lande
50290 Coudeville-Sur-Mer
France
T : +33 233 911 200
www.sermatec.fr